

COPYRIGHT © WHEREIS® REGISTERED TRADEMARK OF SENSIS PTY LTD.

LOCALITY PLAN
NOT TO SCALE

- EXISTING TREES (TYP.)
- EXISTING WATER RESERVOIR (TYP.)
- PROPOSED WATER RESERVOIR BY YASS VALLEY COUNCIL
- EXISTING TELSTRA SITE AND TELSTRA ANTENNA ROOFTOP TO BE RECOVERED
- EXISTING BUILDING (TYP.)

UNAPPROVED
DRAWING

NOTES:

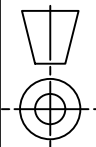
- ALL FEEDER ACCESS POINTS ON THE STRUCTURE MUST BE BIRD PROOFED AS PER EXTERNAL PLANT POLICY 003615.
- THIS DRAWING SET IS A PRELIMINARY DRAWING ONLY AND IS ISSUED FOR COMMENT. IT IS NOT A DETAILED SURVEY / STRUCTURAL DRAWING AND THEREFORE COULD BE SUBJECT TO CHANGE.

NOTE: THIS DRAWING TO BE READ IN CONJUNCTION WITH SHEETS S1-1 & S1-2

PRELIMINARY

DO NOT
SCALE

F



PROPERTY DESCRIPTION

PART OF LOT 1 ON 180130
PARISH OF YASS
COUNTY OF KING

SITE STRUCTURE CO-ORDINATES (GDA94) GPS READING ACCURACY: ± 10m CENTRE OF MONOPOLE	
LATITUDE	GDA 94 -34.82545
LONGITUDE	GDA 94 148.92041



ServiceStream
Level 7, 25 Smith Street, Parramatta, NSW 2150
T +61 3 9677 8888 | www.servicestream.com.au

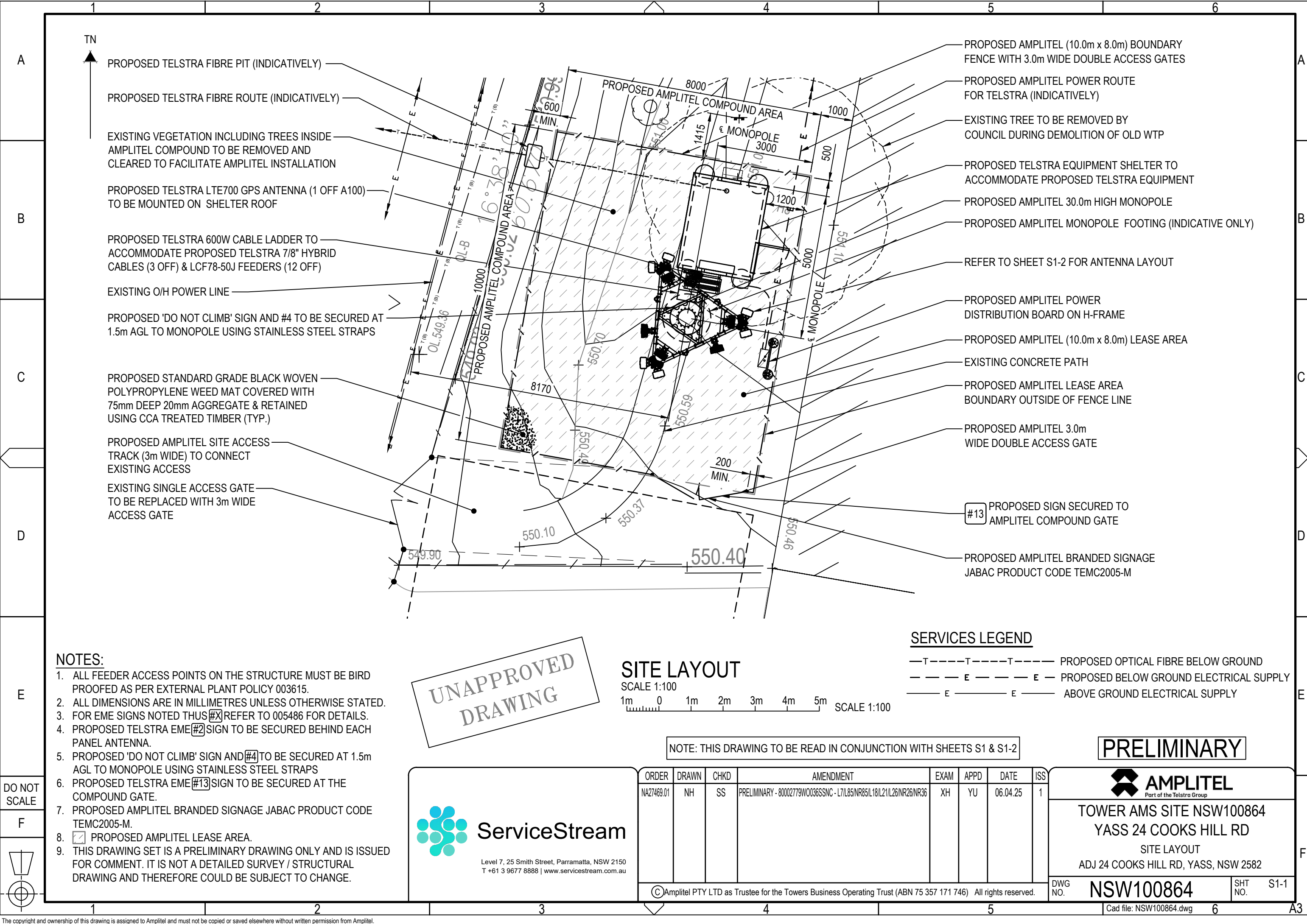
ORDER	DRAWN	CHKD	AMENDMENT	EXAM	APPD	DATE	ISS
NA27469.01	NH	SS	PRELIMINARY - 80002779W0036SSNC - L7/L85/NR85/L18/L21/L26/NR26/NR36	XH	YU	06.04.25	1
©Amplitel PTY LTD as Trustee for the Towers Business Operating Trust (ABN 75 357 171 746) All rights reserved.							



TOWER AMS SITE NSW100864
YASS 24 COOKS HILL RD
SITE ACCESS AND LOCALITY PLAN
ADJ 24 COOKS HILL RD, YASS, NSW 2582

DWG NO.	NSW100864	SHT NO.	S1
---------	-----------	---------	----

Cad file: NSW100864.dwg



A

B

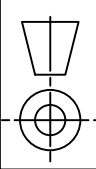
C

D

E

DO NOT
SCALE

F



A

B

C

D

E

F

A3

NOTES:

- 1. ALL FEEDER ACCESS POINTS ON THE STRUCTURE MUST BE BIRD PROOFED AS PER EXTERNAL PLANT POLICY 003615.
- 2. ALL DIMENSIONS ARE IN MILLIMETRES UNLESS OTHERWISE STATED.
- 3. FOR EME SIGNS NOTED THUS (#X) REFER TO 005486 FOR DETAILS.
- 4. PROPOSED TELSTRA EME (#2) SIGN TO BE SECURED BEHIND EACH PANEL ANTENNA.
- 5. PROPOSED 'DO NOT CLIMB' SIGN AND (#4) TO BE SECURED AT 1.5m AGL TO MONOPOLE USING STAINLESS STEEL STRAPS
- 6. PROPOSED TELSTRA EME (#13) SIGN TO BE SECURED AT THE COMPOUND GATE.
- 7. PROPOSED AMPLITEL BRANDED SIGNAGE JABAC PRODUCT CODE TEMC2005-M.
- 8. ☒ PROPOSED AMPLITEL LEASE AREA.
- 9. THIS DRAWING SET IS A PRELIMINARY DRAWING ONLY AND IS ISSUED FOR COMMENT. IT IS NOT A DETAILED SURVEY / STRUCTURAL DRAWING AND THEREFORE COULD BE SUBJECT TO CHANGE.

UNAPPROVED
DRAWING

SITE LAYOUT

SCALE 1:100
1m 0 1m 2m 3m 4m 5m SCALE 1:100

SERVICES LEGEND

- T — — — — T — — — — T — — — — PROPOSED OPTICAL FIBRE BELOW GROUND
- - - - E - - - - E - - - - PROPOSED BELOW GROUND ELECTRICAL SUPPLY
- E — — — — E — — — — ABOVE GROUND ELECTRICAL SUPPLY

NOTE: THIS DRAWING TO BE READ IN CONJUNCTION WITH SHEETS S1 & S1-2

PRELIMINARY



ORDER	DRAWN	CHKD	AMENDMENT	EXAM	APPD	DATE	ISS
NA27469.01	NH	SS	PRELIMINARY - 80002779W0036SSNC - L7/L85/NR85/L18/L21/L26/NR26/NR36	XH	YU	06.04.25	1



TOWER AMS SITE NSW100864
YASS 24 COOKS HILL RD
SITE LAYOUT
ADJ 24 COOKS HILL RD, YASS, NSW 2582

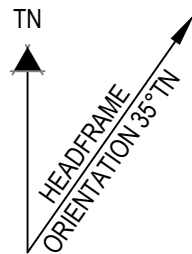
©Amplitel PTY LTD as Trustee for the Towers Business Operating Trust (ABN 75 357 171 746) All rights reserved.

DWG NO. **NSW100864** SHT NO. S1-1

Cad file: NSW100864.dwg

Telstra Networks Wireless program Delivery Template - 017868P02 issue 11 02/12/2013

A
B
C
D
E
F



PROPOSED TELSTRA TMA KA-1033 (6 OFF) TO BE ATTACHED BEHIND PANEL ANTENNAS (A1, A2, A3, A4, A5 & A6) ON PROPOSED MOUNTS

PROPOSED TELSTRA NR3600 PANEL ANTENNAS (3 OFF A7, A8 & A9) ON PROPOSED MOUNTS

PROPOSED TELSTRA LTE1800/LTE2100/LTE2600/NR2600 RADIO 4466 (B1/B3/B7) (3 OFF) WITH JUNCTION BOXES (3 OFF) (BELOW) ON PROPOSED RRU MOUNTS

PROPOSED AMPLITEL 30.0m HIGH MONOPOLE WITH TRIANGULAR HEADFRAME

PROPOSED TELSTRA LTE700/NR850/LTE850 PANEL ANTENNAS (3 OFF A2, A4 & A6) ON PROPOSED MOUNTS

PROPOSED TELSTRA LTE700/LTE850/NR850/LTE1800/LTE2100/LTE2600/NR2600 PANEL ANTENNAS (3 OFF A1, A3 & A5) ON PROPOSED MOUNTS

2 BEHIND EACH PANEL ANTENNA

UNAPPROVED
DRAWING

ANTENNA LAYOUT AT EL 30.0m AND RADIO LAYOUT AT EL 30.5m

SCALE 1:25
500 0 500 1000 SCALE 1:25

NOTE: THIS DRAWING TO BE READ IN CONJUNCTION WITH SHEETS S1 & S1-1

PRELIMINARY

DO NOT
SCALE

F

NOTES:

- FOR EME SIGNS NOTED THUS #X REFER TO 005486 FOR DETAILS.
- #2 EME SIGN TO BE SECURED BEHIND EACH PANEL ANTENNAS.



ServiceStream

Level 7, 25 Smith Street, Parramatta, NSW 2150
T +61 3 9677 8888 | www.servicestream.com.au

ORDER	DRAWN	CHKD	AMENDMENT	EXAM	APPD	DATE	ISS
NA27469.01	NH	SS	PRELIMINARY - 80002779W0036SSNC - L7/L85/NR85/L18/L21/L26/NR26/NR36	XH	YU	06.04.25	1

© Telstra Corporation Limited ABN 33 051 775 556 All rights reserved.



MOBILE NETWORK SITE 383424
YASS 24 COOKS HILL RD
ANTENNA LAYOUT
ADJ 24 COOKS HILL RD, YASS, NSW 2582

DWG NO. N112168 SHT NO. S1-2

Cad file: NSW100864.dwg

Telstra Networks Wireless program Delivery Template - 017866P02 issue 11.4 XX XX/ 2015

DO NOT
SCALE



ServiceStream

Level 7, 25 Smith Street, Parramatta, NSW 2150
T +61 3 9677 8888 | www.servicestream.com.au

©Amplitel PTY LTD as Trustee for the Towers Business Operating Trust (ABN 75 357 171 746) All rights reserved.

ORDER	DRAWN	CHKD	AMENDMENT	EXAM	APPD	DATE	ISS
NA27469.01	NH	SS	PRELIMINARY - 80002779W0036SSNC - L7/L85/NR85/L18/L21/L26/NR26/NR36	XH	YU	06.04.25	1

PRELIMINARY



TOWER AMS SITE NSW100864
YASS 24 COOKS HILL RD
SOUTH ELEVATION
ADJ 24 COOKS HILL RD, YASS, NSW 2582

DWG
NO.

NSW100864

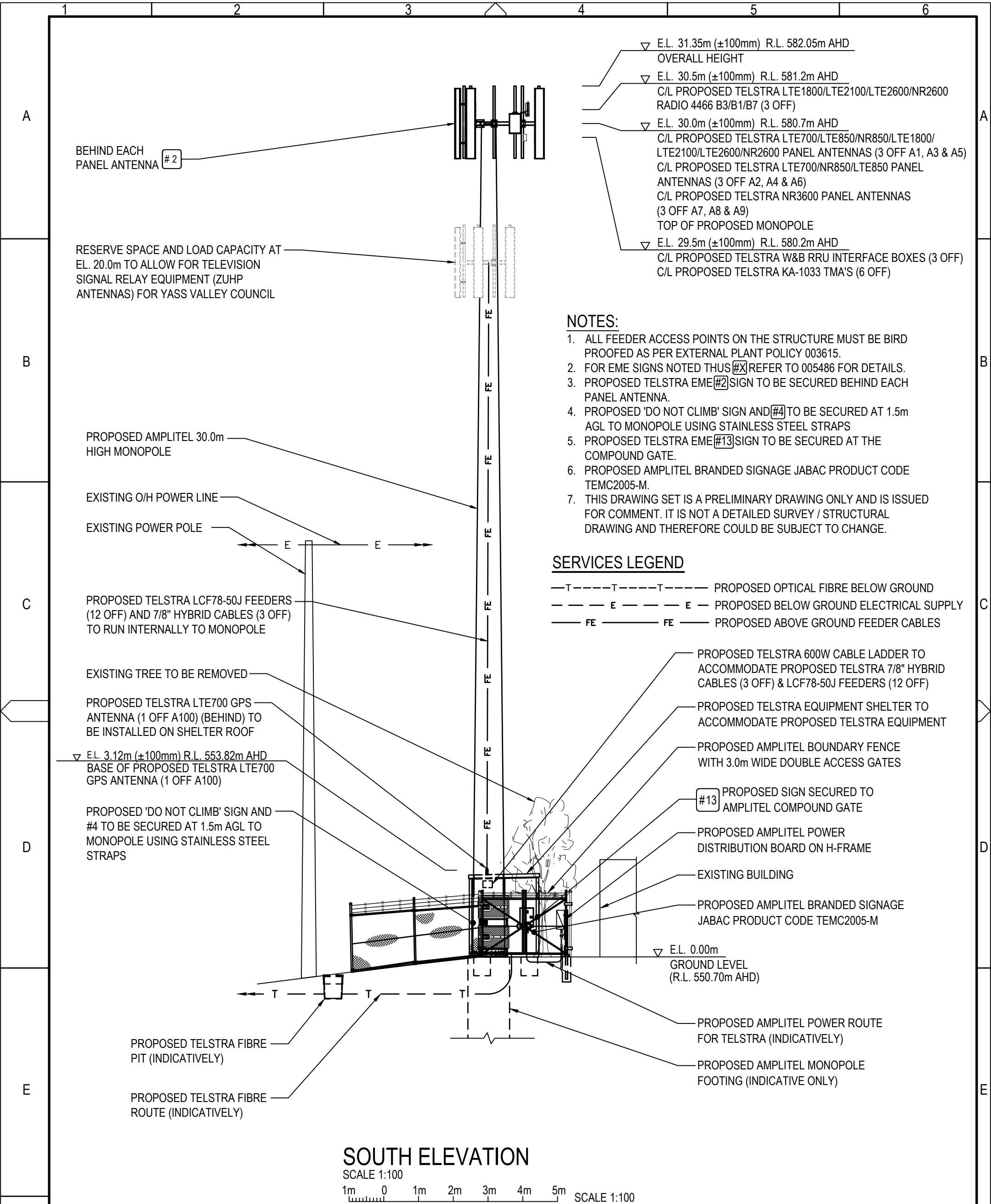
SHT
NO.

S3

Cad file: NSW100864.dwg

A3V

The copyright and ownership of this drawing is assigned to Telstra and must not be copied or saved elsewhere without written permission from Telstra.



NOTES:

1. ALL FEEDER ACCESS POINTS ON THE STRUCTURE MUST BE BIRD PROOFED AS PER EXTERNAL PLANT POLICY 003615.
2. FOR EME SIGNS NOTED THUS **#X** REFER TO 005486 FOR DETAILS.
3. PROPOSED TELSTRA EME **#2** SIGN TO BE SECURED BEHIND EACH PANEL ANTENNA.
4. PROPOSED 'DO NOT CLIMB' SIGN AND **#4** TO BE SECURED AT 1.5m AGL TO MONOPOLE USING STAINLESS STEEL STRAPS
5. PROPOSED TELSTRA EME **#13** SIGN TO BE SECURED AT THE COMPOUND GATE.
6. PROPOSED AMPLITEL BRANDED SIGNAGE JABAC PRODUCT CODE TEMC2005-M.
7. THIS DRAWING SET IS A PRELIMINARY DRAWING ONLY AND IS ISSUED FOR COMMENT. IT IS NOT A DETAILED SURVEY / STRUCTURAL DRAWING AND THEREFORE COULD BE SUBJECT TO CHANGE.

SERVICES LEGEND

- T—T—T—T— PROPOSED OPTICAL FIBRE BELOW GROUND
- E—E—E—E— PROPOSED BELOW GROUND ELECTRICAL SUPPLY
- FE—FE—FE—FE— PROPOSED ABOVE GROUND FEEDER CABLES

TELSTRA MOBILES ANTENNA CONFIGURATION TABLE					
ANTENNA No	ANTENNA TYPE & SIZE H x W x D	ANTENNA ACTION REQUIRED	ANTENNA HEIGHT C/L A.G.L.	PHYSICAL ANTENNA BEARING (°T)	SECTOR NO. & TECHNOLOGY
A1	COMMSCOPE RVVPX310.11B-T2H PANEL 2533 x 350 x 208mm	INSTALL	30.0m	20°	S1: LTE700/LTE850/NR850 S1: LTE700/LTE850/NR850
					S1: LTE1800/LTE2100/LTE2600/NR2600 S1: LTE1800/LTE2100/LTE2600/NR2600
					S1: LTE1800/LTE2100/LTE2600/NR2600 S1: LTE1800/LTE2100/LTE2600/NR2600
					S1: LTE1800/LTE2100/LTE2600/NR2600 S1: LTE1800/LTE2100/LTE2600/NR2600
A2	COMMSCOPE RVVPX310.11B-T2H PANEL 2533 x 350 x 208mm	INSTALL	30.0m	20°	S1: LTE700/LTE850/NR850 S1: LTE700/LTE850/NR850
					S1: SPARE S1: SPARE
					S1: SPARE S1: SPARE
					S1: SPARE S1: SPARE
A3	COMMSCOPE RVVPX310.11B-T2H PANEL 2533 x 350 x 208mm	INSTALL	30.0m	165°	S2: LTE700/LTE850/NR850 S2: LTE700/LTE850/NR850
					S2: LTE1800/LTE2100/LTE2600/NR2600 S2: LTE1800/LTE2100/LTE2600/NR2600
					S2: LTE1800/LTE2100/LTE2600/NR2600 S2: LTE1800/LTE2100/LTE2600/NR2600
					S2: LTE1800/LTE2100/LTE2600/NR2600 S2: LTE1800/LTE2100/LTE2600/NR2600
A4	COMMSCOPE RVVPX310.11B-T2H PANEL 2533 x 350 x 208mm	INSTALL	30.0m	165°	S2: LTE700/LTE850NR850 S2: LTE700/LTE850NR850
					S2: SPARE S2: SPARE
					S2: SPARE S2: SPARE
					S2: SPARE S2: SPARE
A5	COMMSCOPE RVVPX310.11B-T2H PANEL 2533 x 350 x 208mm	INSTALL	30.0m	270°	S3: LTE700/LTE850/NR850 S3: LTE700/LTE850/NR850
					S3: LTE1800/LTE2100/LTE2600/NR2600 S3: LTE1800/LTE2100/LTE2600/NR2600
					S3: LTE1800/LTE2100/LTE2600/NR2600 S3: LTE1800/LTE2100/LTE2600/NR2600
					S3: LTE1800/LTE2100/LTE2600/NR2600 S3: LTE1800/LTE2100/LTE2600/NR2600
A6	COMMSCOPE RVVPX310.11B-T2H PANEL 2533 x 350 x 208mm	INSTALL	30.0m	270°	S3: LTE700/LTE850/NR850 S3: LTE700/LTE850/NR850
					S3: SPARE S3: SPARE
					S3: SPARE S3: SPARE
					S3: SPARE S3: SPARE
A7	ERICSSON AIR3258 PANEL 793 x 408 x 235mm	INSTALL	30.0m	20°	S1: NR3600 S1: NR3600
A8	ERICSSON AIR3258 PANEL 793 x 408 x 235mm	INSTALL	30.0m	165°	S2: NR3600 S2: NR3600
A9	ERICSSON AIR3258 PANEL 793 x 408 x 235mm	INSTALL	30.0m	270°	S3: NR3600 S3: NR3600
A100	KAEIUS KA7005-1110 GPS ANTENNA	INSTALL	BASE OF GPS 3.12m	0°	-

UNAPPROVED
DRAWING

NOTE: THIS DRAWING TO BE READ IN CONJUNCTION WITH SHEET S3

PRELIMINARY



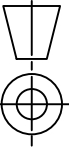
MOBILE NETWORK SITE 383424
YASS 24 COOKS HILL RD
ANTENNA CONFIGURATION TABLE
ADJ 24 COOKS HILL RD, YASS, NSW 2582

DWG NO. N112168 SHT NO. S3-1

Cad file: NSW100864.dwg

A3V

DO NOT
SCALE



ServiceStream
Level 7, 25 Smith Street, Parramatta, NSW 2150
T +61 3 9677 8888 | www.servicestream.com.au

© Telstra Corporation Limited ABN 33 051 775 556 All rights reserved.